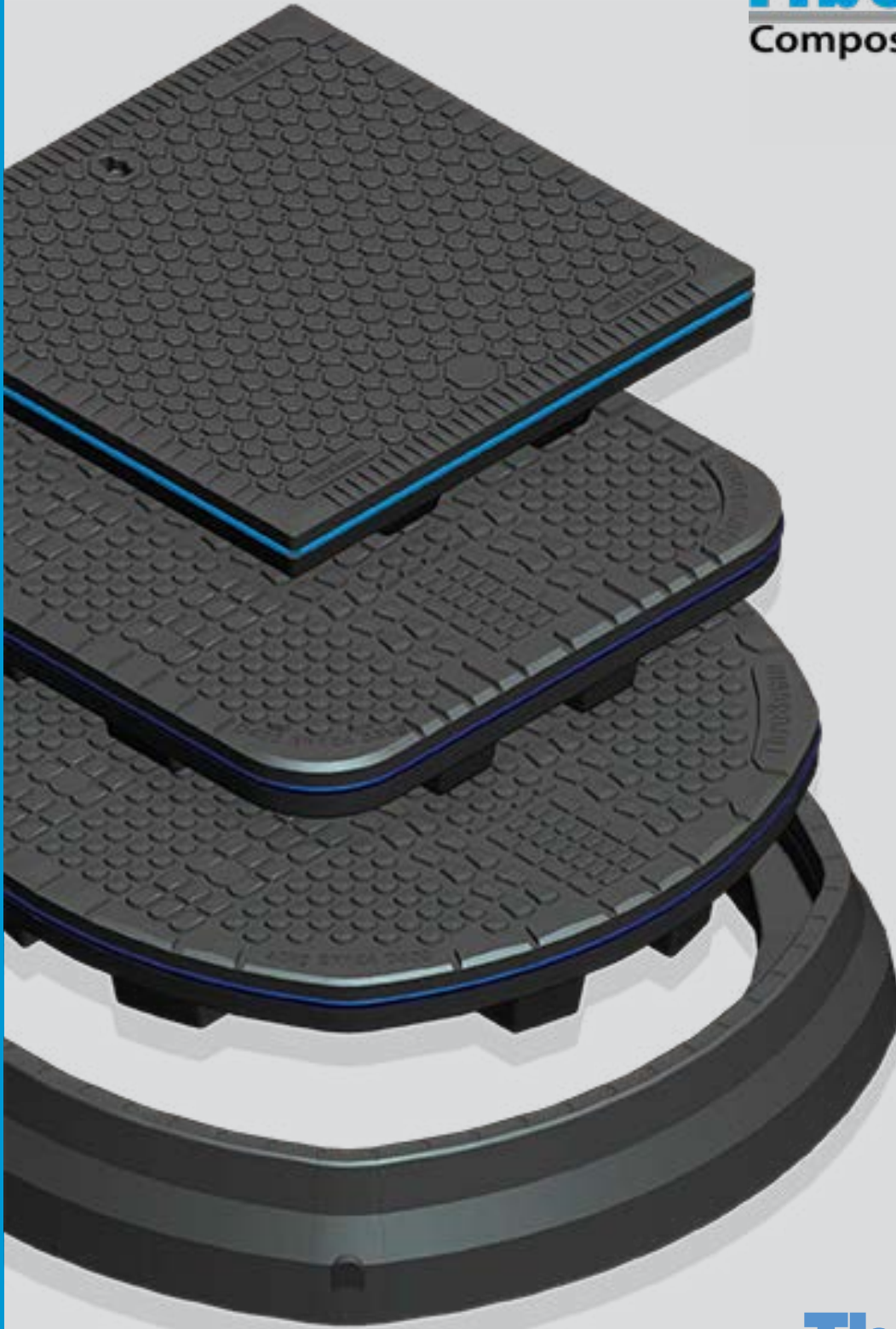
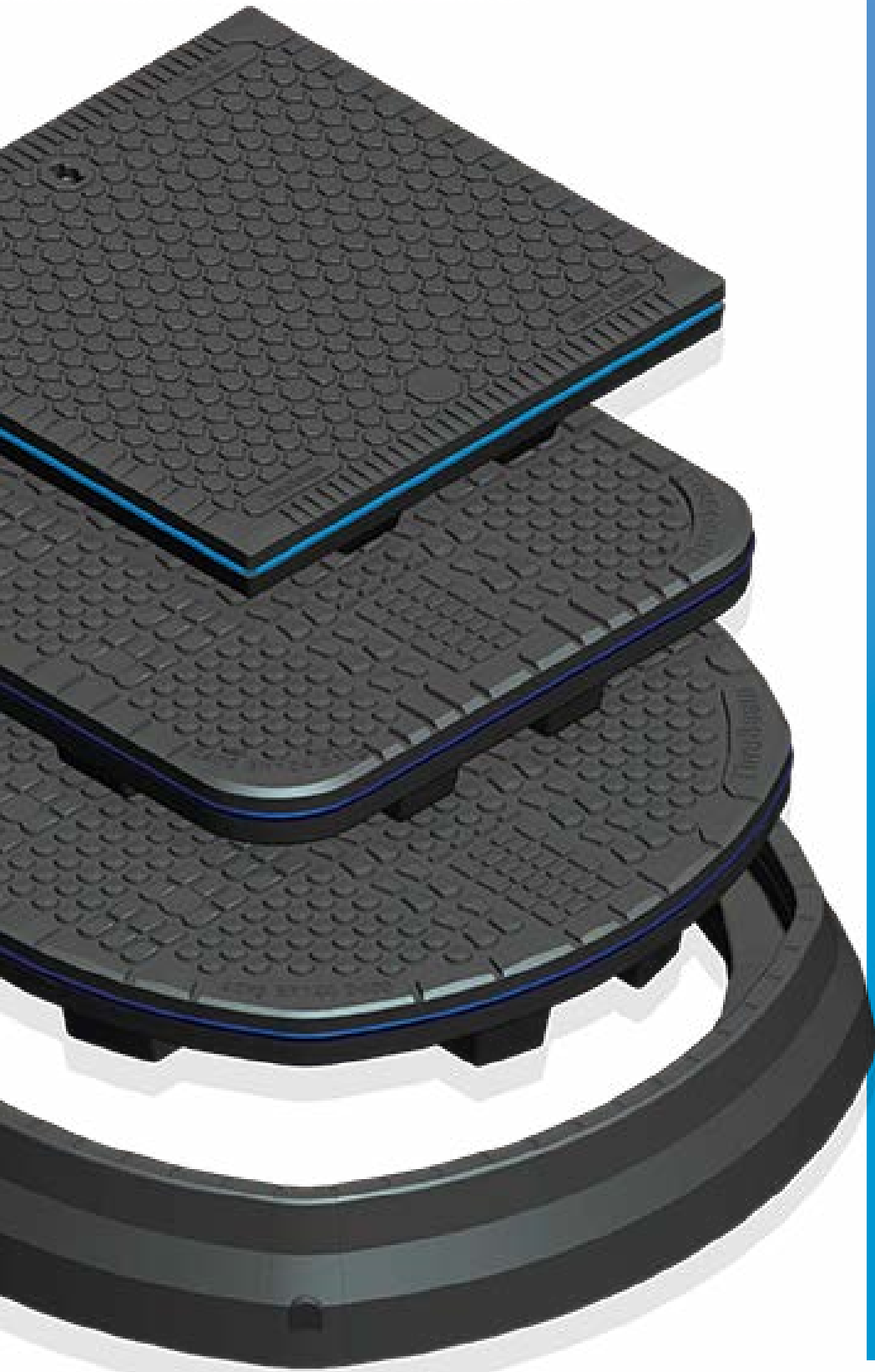


Fibergrate
Composite Structures



ThruBeam[®]
COVERS

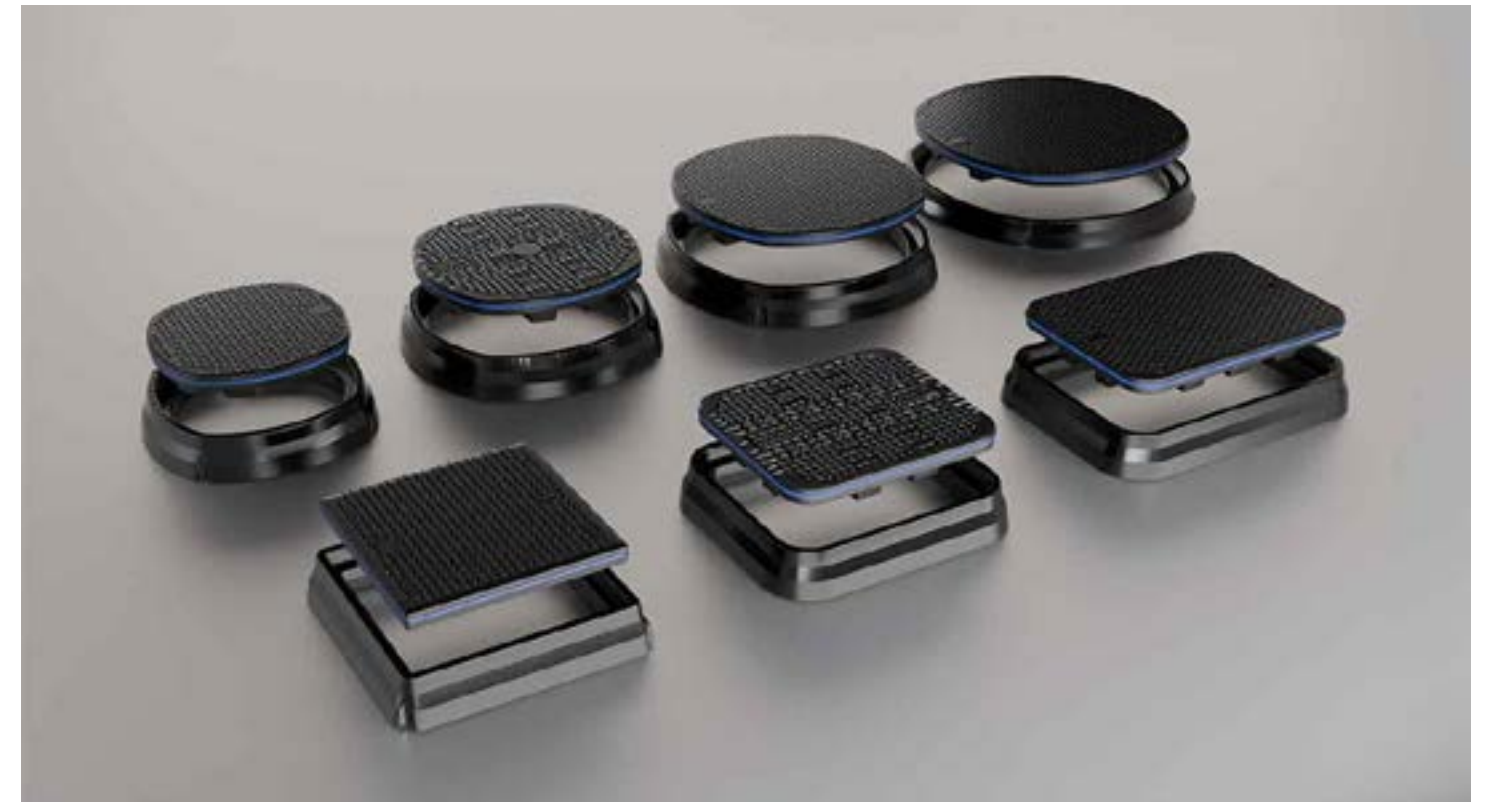
M A N H O L E C O V E R S



ThruBeam® Manhole Covers, originally developed in the United Kingdom, are now part of the expanding product portfolio of Fibergrate Composite Structures.

Engineered to suit a wide range of load classifications, these fiberglass reinforced plastic (FRP) covers utilize proprietary technology to deliver high load performance while remaining significantly lighter than traditional alternatives.

By introducing ThruBeam® to the U.S. market, Fibergrate expands its offering of corrosion-resistant, low-maintenance composite access covers designed to protect and provide safe entry to critical utility and infrastructure systems.



SAFER, SMARTER UNDERGROUND ACCESS FOR CRITICAL UTILITY AND INFRASTRUCTURE SYSTEMS

- ✓ Single-Person Lift Design
- ✓ AASHTO Rated Performance
- ✓ RF Transparent Construction
- ✓ Dip Cap Option Available
- ✓ Pressure Release Locking Mechanism (PRLM)
- ✓ Industry-leading vented composite manhole cover designs

Designed for single-person handling, ThruBeam® composite covers reduce manual handling risk while delivering AASHTO-rated load performance.

RF-transparent by design, ThruBeam® covers support uninterrupted wireless communication for modern utility networks, while corrosion-resistant construction ensures reliable performance in aggressive and coastal environments.

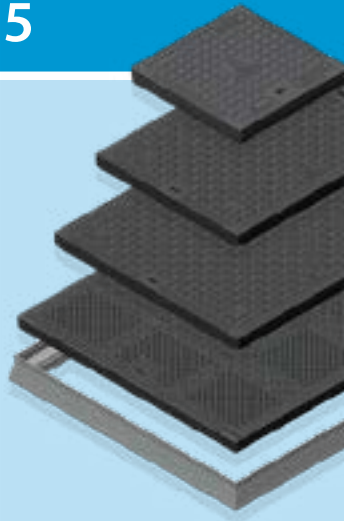
With a 30+ year maintenance-free lifecycle and zero scrap value, ThruBeam® significantly reduces theft risk, ongoing maintenance, and total cost of ownership. ThruBeam® also offers industry-leading vented composite manhole cover designs, supporting airflow and pressure management in sensitive applications, alongside options including dip caps, watertight seals, pressure-release locking mechanisms (PRLM), and custom branding.



TIER 8/TIER 15

Sizes Available:

- 12"
- 24"
- 32"
- 24" X 18"



H20/H25

Sizes Available:

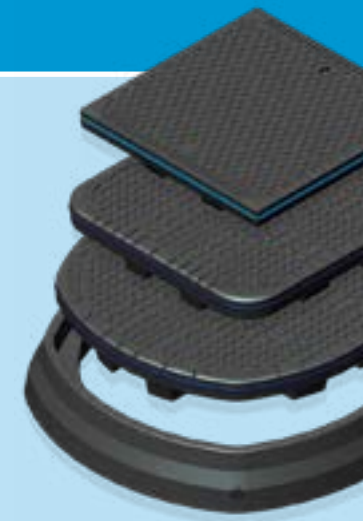
- 24"
- 30"
- 36"
- 42"



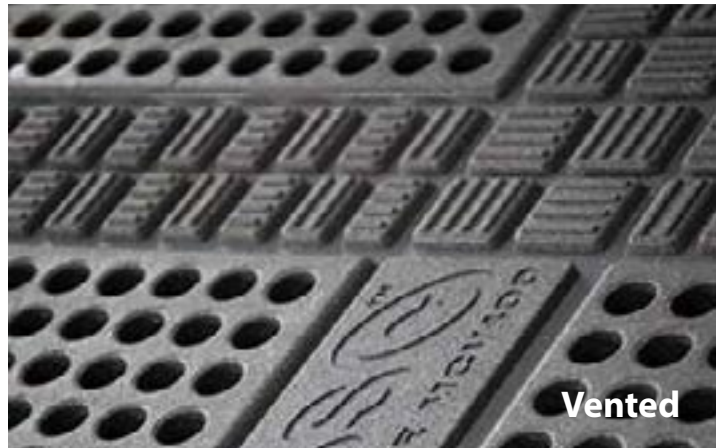
H40

Sizes Available:

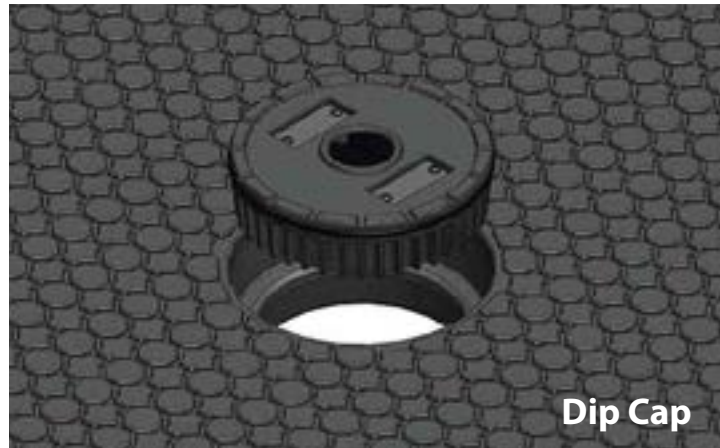
- 24"
- 30"
- 36"
- 42"
- 24" X 28"
- 24" X 36"



UNIVERSAL OPTIONS



Vented



Dip Cap



Dip Cap



Custom Branding



Locking Mechanism



Locking Mechanism



Locking Mechanism



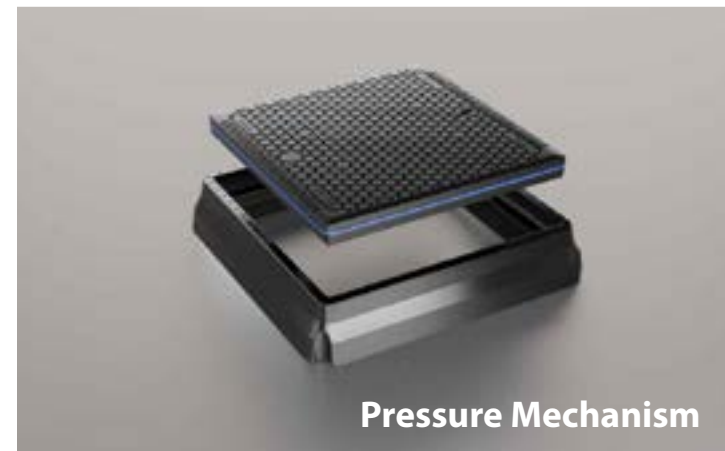
Non-Slip



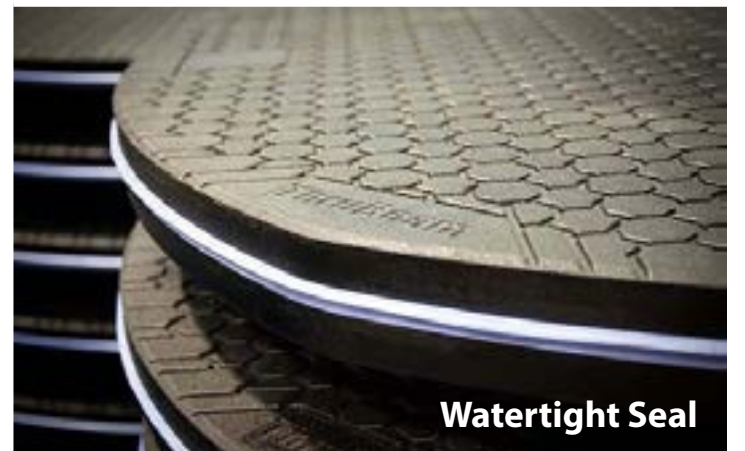
Lifting Aid



Lifting Aid



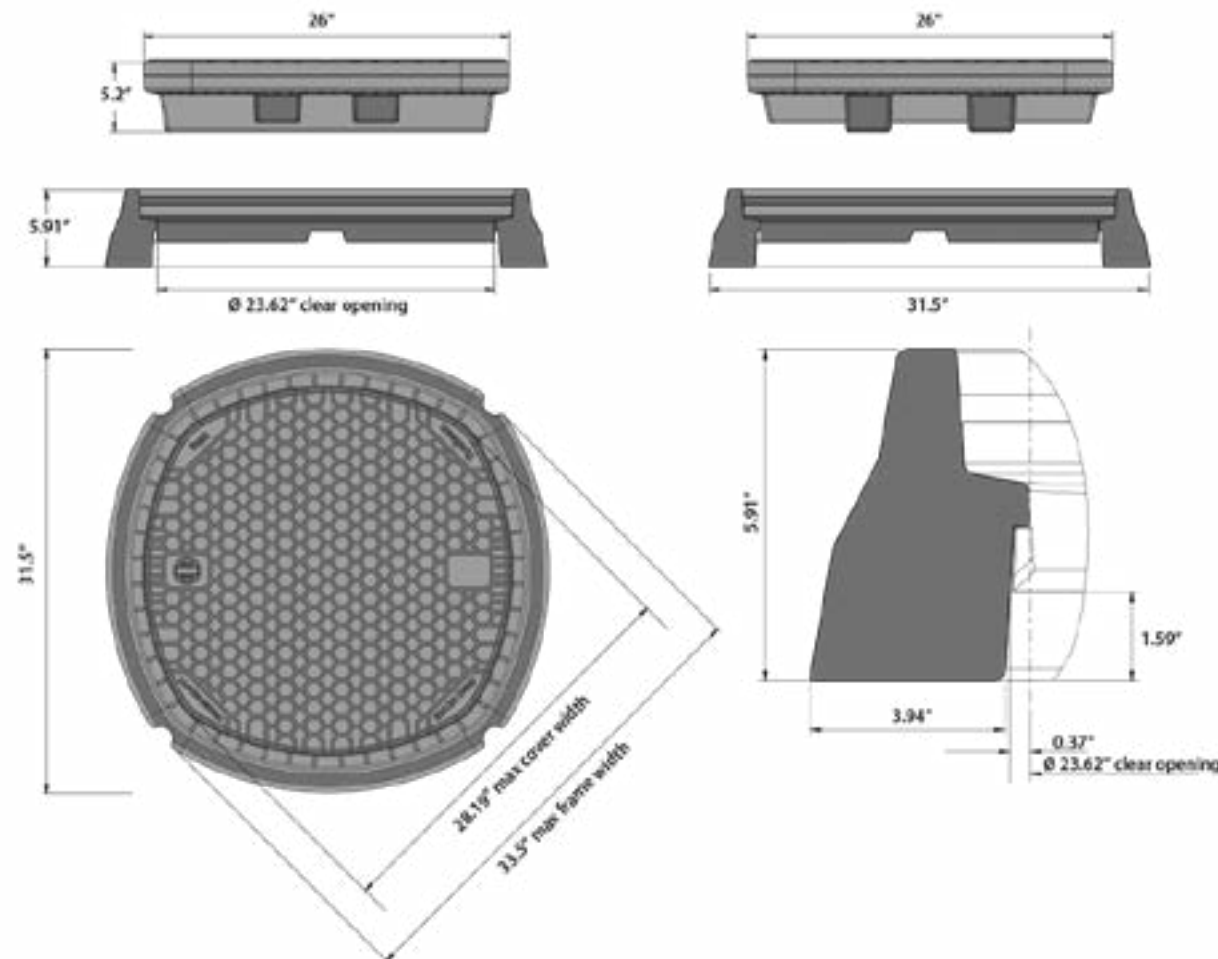
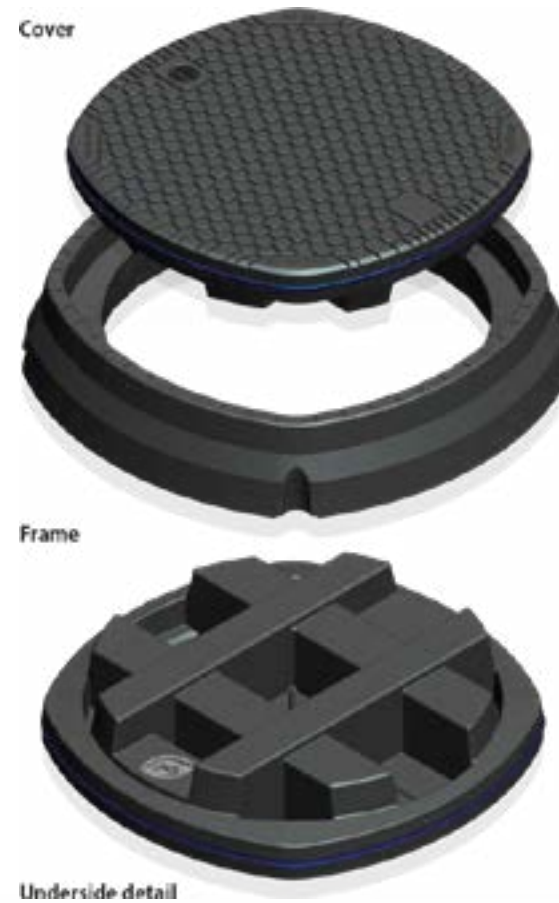
Pressure Mechanism



Watertight Seal

H20R24 24" Solid

Round Vehicular Access
Cover



COVER SPECIFICATION

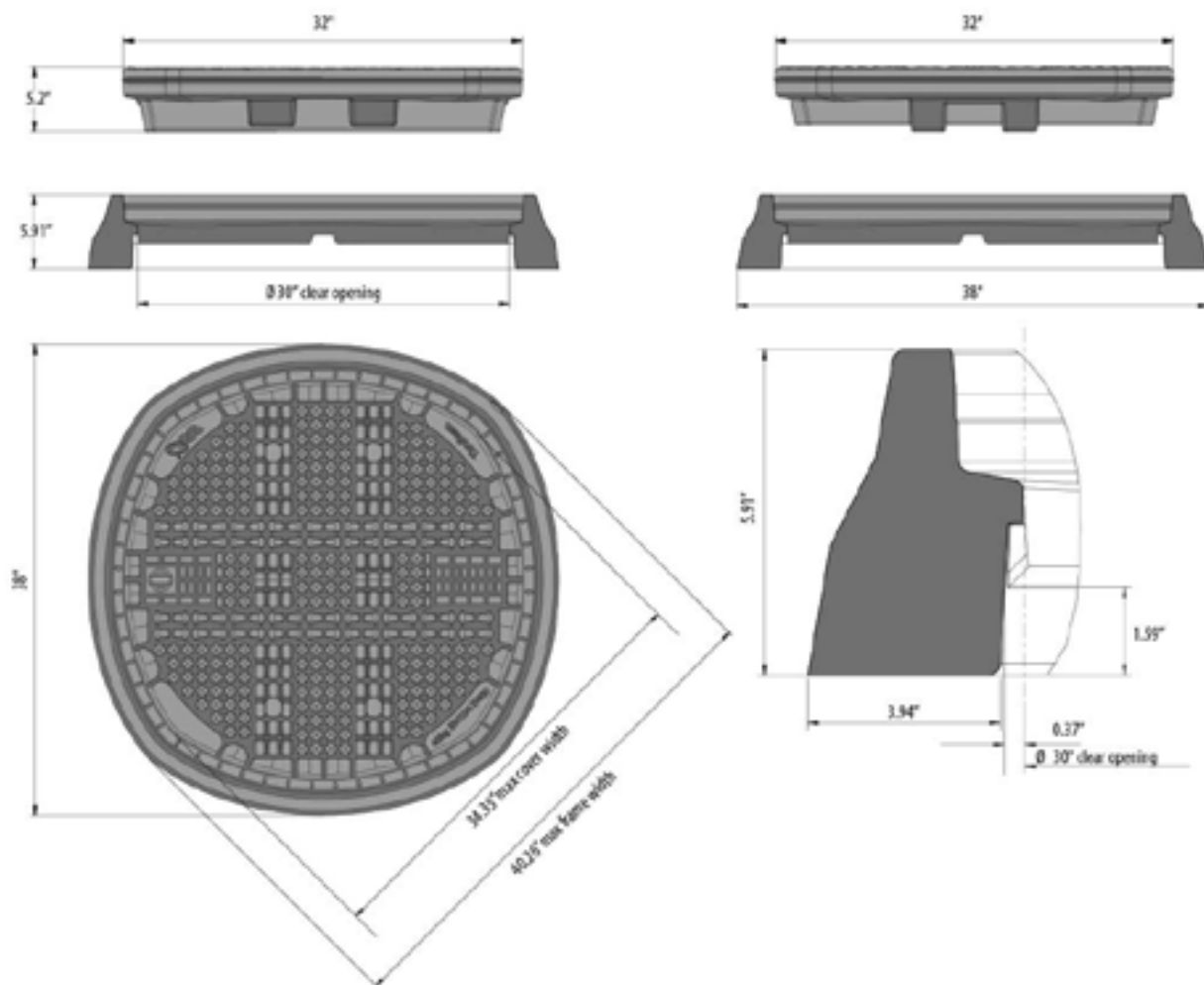
Load Rating	AASHTO H20
Clear Opening	23.62" Diameter
External Dimensions	26" Depth 5.2"
Skid Resistance (wet polishes)	ASTM E303
Weight	61.6lb Combined weight with frame 90.4lb
Lifting points	Single key housing (also available with pry points)
Tread type	Embedded aggregate – uni-directional
Markings	Week, year and location of manufacture on the underside of cover. Cover class and weight on the top surface.
Corrosion/Chemical resistance	All component parts are resistant to chemical attack, diesel, petrol, salt and water or a combination of the above over the lifespan of the cover. Surface discoloration is acceptable in service.
Sealed	Yes (optional - can be retro-fitted)
Carbon footprint	Low
Client logo	Can be provided on top surface
Security Features	Lock and security plug (lock cannot be left open on replacement of cover)

H20R30 30" Solid

Round Vehicular Composite
Access Cover



Underside detail

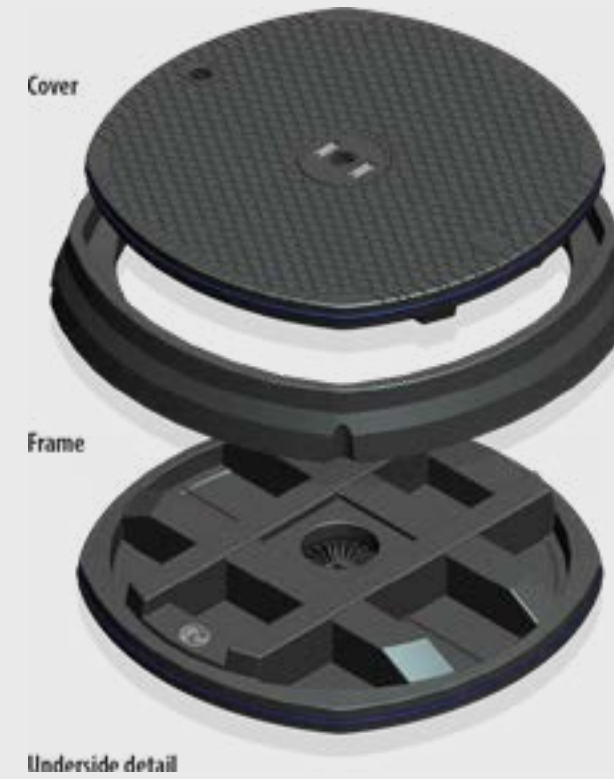


COVER SPECIFICATION

Load Rating	AASHTO H20
Clear Opening	30" Diameter
External Dimensions	32" Depth 5.2"
Skid Resistance (wet polishes)	ASTM E303
Weight	79.3lb Combined weight with frame 114.6lb
Lifting points	Single key housing (also available with pry points)
Tread type	Embedded aggregate – uni-directional
Markings	Week, year and location of manufacture on the underside of cover. Cover class and weight on the top surface.
Corrosion/Chemical resistance	All component parts are resistant to chemical attack, diesel, petrol, salt and water or a combination of the above over the lifespan of the cover. Surface discoloration is acceptable in service.
Sealed	Yes (optional - can be retro-fitted)
Carbon footprint	Low
Client logo	Can be provided on top surface
Security Features	Lock and security plug (lock cannot be left open on replacement of cover)

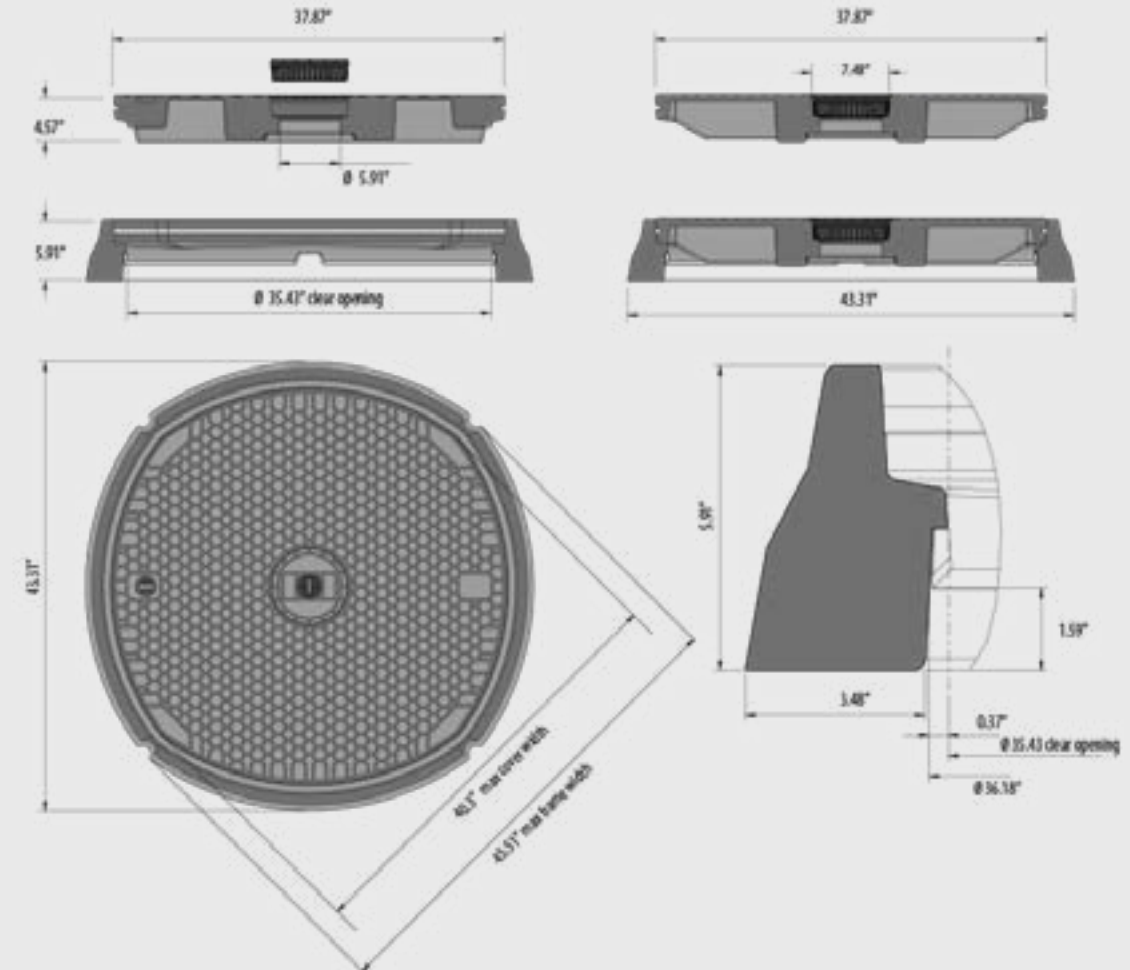
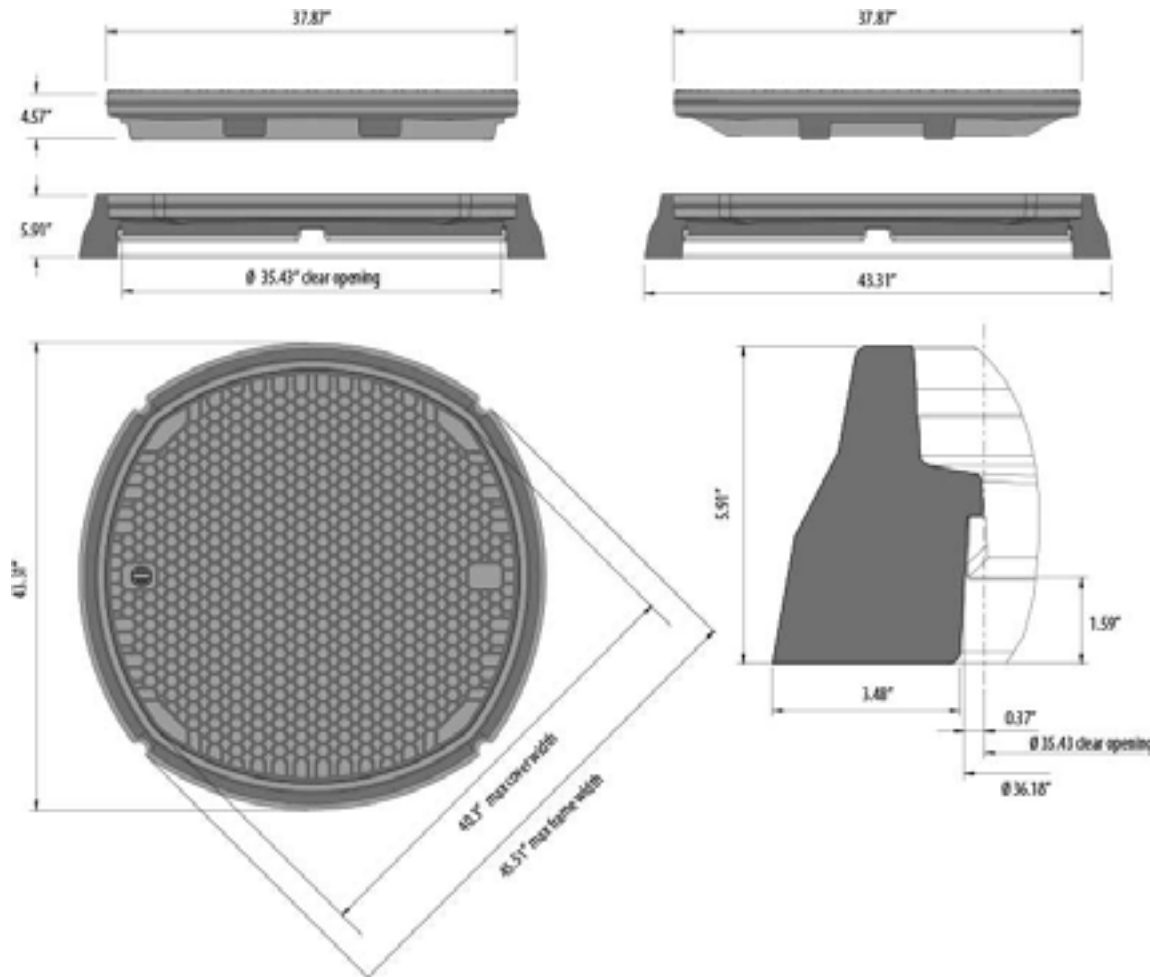
H20R36 / H20R36-DC 36" Solid

Round Fueling Station Composite
Access Cover



COVER SPECIFICATION

Load Rating	AASHTO H20
Skid Resistance (wet polishes)	ASTM E303
Weight	68.3lb Combined weight with frame 101.4lb
Lifting points	Single key housing (also available with pry points)
Tread type	Embedded aggregate – uni-directional
Markings	Week, year and location of manufacture on the underside of cover. Cover class and weight on the top surface.
Sealed	Yes (optional - can be retro-fitted)
Client logo	Can be provided on top surface
Security Features	Lock and security plug (lock cannot be left open on replacement of cover)



H20R42 / H20R42-DC 42" Solid

Round Fueling Station Composite
Access Cover

Cover

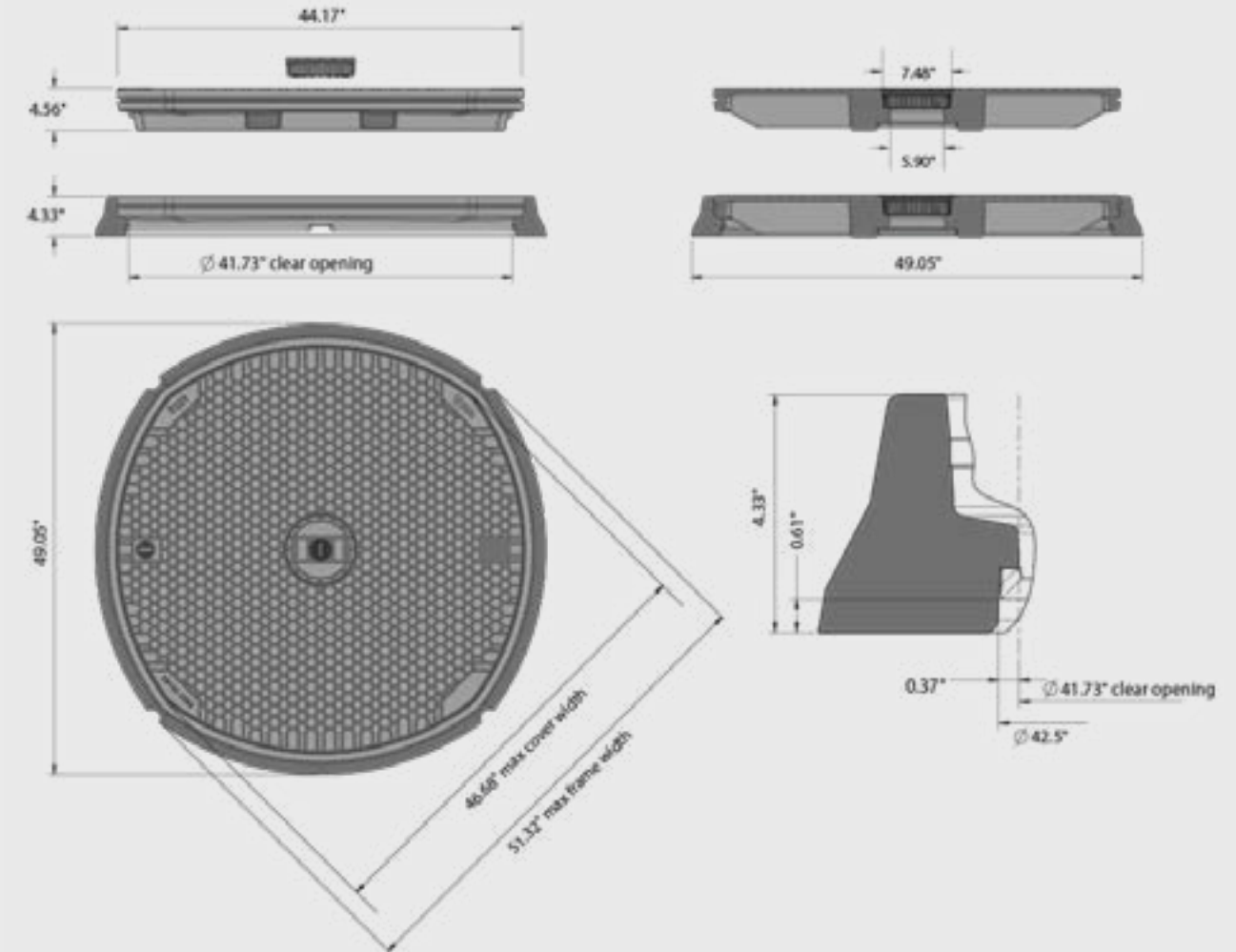
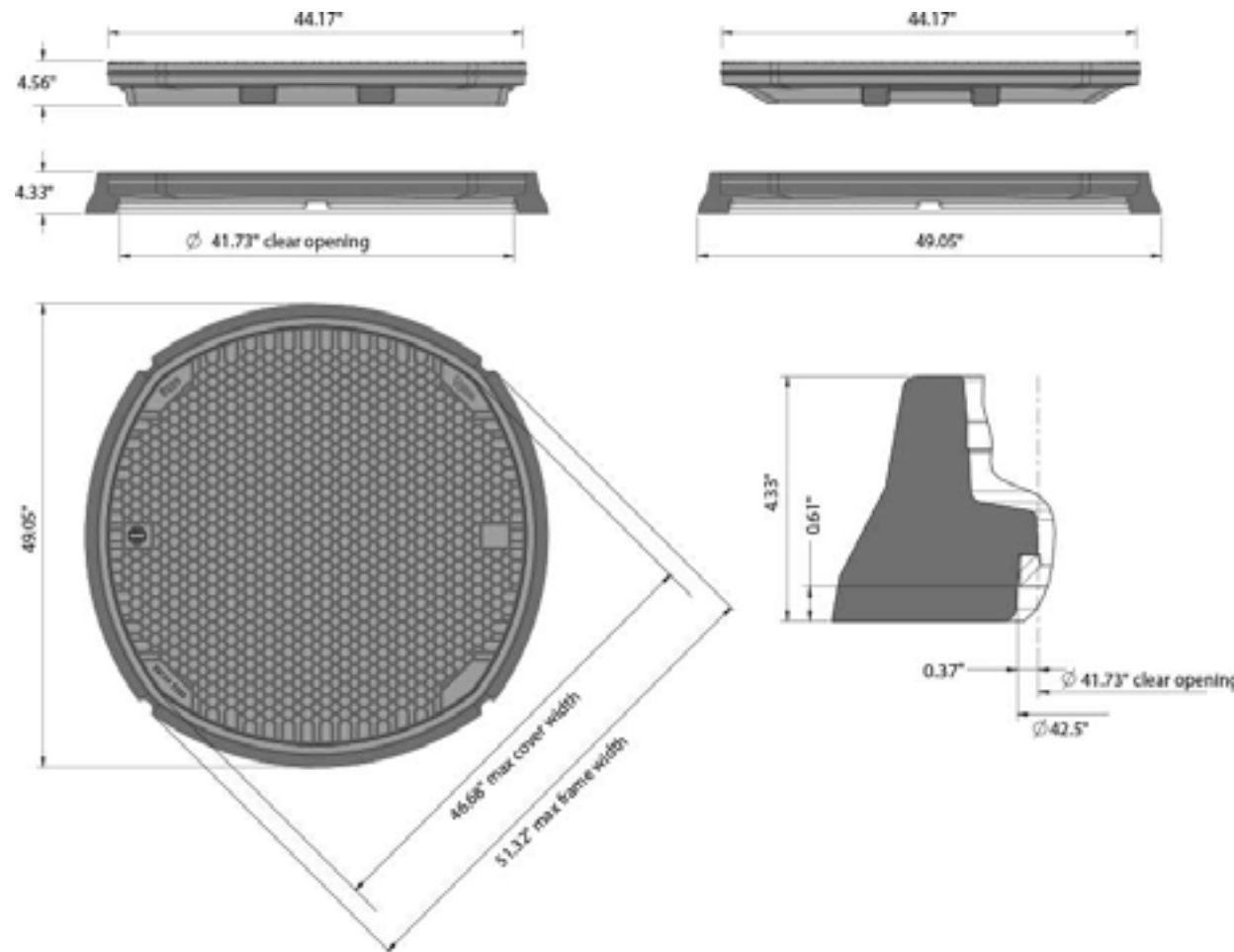
Frame

Underside detail



COVER SPECIFICATION

Load Rating	AASHTO H20
Skid Resistance (wet polishes)	ASTM E303
Weight	114.6lb Combined weight with frame 143.3lb
Lifting points	Single key housing
Tread type	Embedded aggregate – uni-directional
Markings	Week, year and location of manufacture on the underside of cover. Cover class and weight on the top surface.
Sealed	Yes (optional - can be retro-fitted)
Client logo	Can be provided on top surface
Security Features	Lock and security plug (lock cannot be left open on replacement of cover)



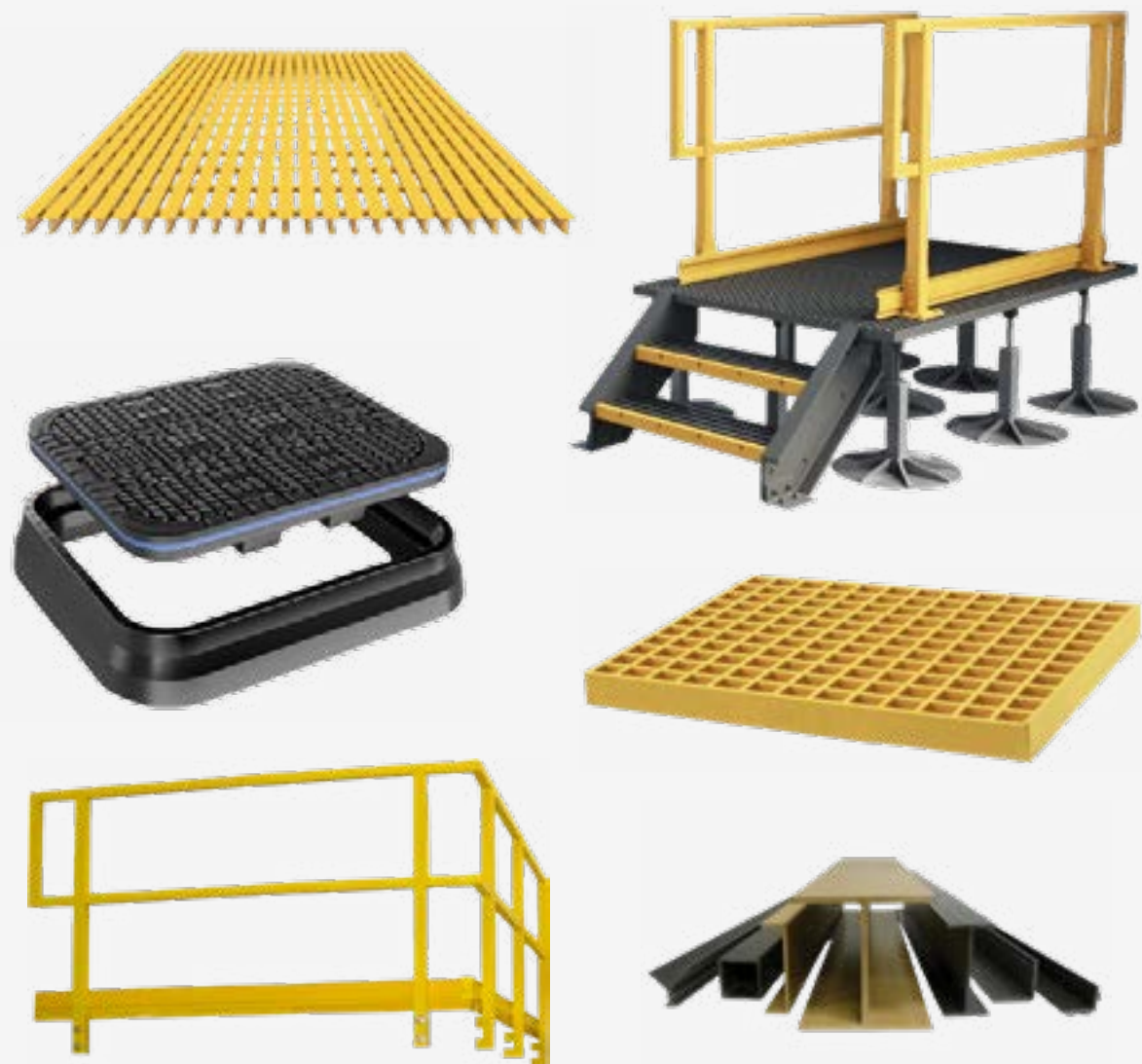
Classification	US Product Name	Opening Type	COVER				
			Length (in)	Width (in)	Depth (in)	Weight (lbs)	
TIER 8/ TIER 15	T15M1212	Clear Opening	11.85	11.85	1.65	11.02	
		External Dimensions	13.15	13.15	2.40		
	T15M2418	Clear Opening	23.62	17.72		22.05	
		External Dimensions	25.98	20.08	2.76		
	T15M2424	Clear Opening	23.62	23.62		26.46	
		External Dimensions	25.98	25.98	2.76		
	T15M3232	Clear Opening	31.50	31.50		46.30	
		External Dimensions	33.86	33.86	3.39		
	H20/H25	H20R24	Clear Opening	23.62	23.62		61.73
			External dimensions	26.06	26.06	5.20	
		H20R30	Clear Opening	29.92	29.92		79.37
			External dimensions	32.05	32.05	5.20	
H20R36 / H20R36-DC		Clear Opening	35.43	35.43		68.34	
		External dimensions	37.87	37.87	4.45		
H20R42 / H20R42-DC		Clear Opening	41.73	41.73		88.18	
		External dimensions	44.17	44.17	4.57		
H40		H40R24	Clear Opening	24.02	24.02		63.93
			External dimensions	26.46	26.46	5.20	
		H40M2824	Clear Opening	23.62	27.56		72.75
			External dimensions	26.30	30.24	5.00	
	H40M3624	Clear Opening	23.62	35.43		99.21	
		External dimensions	26.30	38.11	5.00		
	H40M2424P	Clear Opening	23.62	23.62		61.73	
		External dimensions	26.06	26.06	5.20		
	H40R30	Clear Opening	29.92	29.92		79.37	
		External dimensions	32.05	32.05	5.20		
	H40R36	Clear Opening	35.43	35.43		101.41	
		External dimensions	37.87	37.87	5.20		
	H40R42 / H40R42-DC	Clear Opening	41.73	41.73		114.64	
		External dimensions	44.17	44.17	4.57		

Length (in)	Width (in)	Depth (in)	Weight (lbs)	FRAME		
				Material	Combined Weight (lbs)	
			13.23	Aluminium/ Galvanized Steel	24.25	
13.43	13.43	2.40				
23.62	17.72		3.75		25.79	
26.81	20.91	1.75				
23.62	23.62		4.19		30.64	
26.81	26.81	1.75				
31.50	31.50		15.43		61.73	
35.04	35.04	3.94				
23.62	23.62		28.66		FRP	90.39
31.50	31.50	5.91				
29.92	29.92		35.27			114.64
37.99	37.99	5.91				
35.43	35.43		33.07	101.41		
43.31	43.31	5.91				
41.73	41.73		28.66	116.84		
49.05	49.05	4.33				
24.02	24.02		33.07	FRP		97.00
31.89	31.89	5.91				
23.62	27.56		34.17			106.92
31.50	35.43	5.91				
23.62	35.43	5.91	34.17		133.38	
31.50	43.31					
23.62	23.62		28.66		90.39	
31.50	31.50	5.91				
29.92	29.92		35.27		114.64	
37.99	37.99	5.91				
35.43	35.43		33.07		134.48	
43.31	3.94	5.91				
41.73	41.73		28.66	143.30		
49.06	49.06	4.33				



Over 50 years of building safe and innovative environments for people to work, live, and play.

Our wide range of lightweight FRP products gives you the flexibility to create safe and innovative solutions without the limitations of traditional materials such as steel, wood or concrete.



FRP COMPOSITE SOLUTIONS

ACCESS & SAFETY SOLUTIONS

- FRP gratings (molded & pultruded)
- Access platforms & step overs
- Walkways & cable management systems
- Non conductive handrail, guardrail & ladder systems
- FRP Stair Tread Covers / Nosings / Ladders



STRUCTURAL SOLUTIONS

- Dynaform® pultruded structural profiles
- Equipment protection structures
- Modular FRP frameworks for utility plants



SURFACE & FLOORING SOLUTIONS

- Safe T Span® industrial & pedestrian grating for trenching, walkways, wet wells, culverts, & chemical zones
- Dynadeck® interlocking flooring for rapid installation in treatment facilities
- Anti Slip





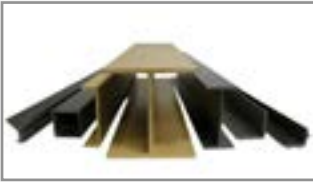
Fibergrate® Molded Grating

Fibergrate® molded gratings are designed to provide the ultimate in reliable performance, even in the most demanding conditions. Fibergrate offers the widest selection in the market with multiple resins and more than twenty grating configurations available in many panel sizes and surfaces.



Safe-T-Span® Pultruded Industrial & Pedestrian Gratings

Combining corrosion resistance, long-life and low maintenance, Safe-T-Span® provides unidirectional strength for industrial and pedestrian pultruded grating applications.



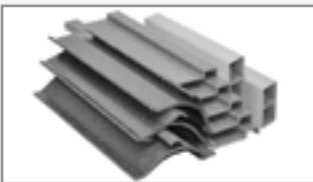
Dynaform® Structural Shapes

Fibergrate offers a wide range of standard Dynaform® pultruded structural profiles for industrial and commercial use, including I-beams, wide flange beams, round and square tubes, bars, rods, channels, leg angles and plate.



Dynarail® & DynaRound® Guardrail, Handrail & Ladder

Easily assembled from durable components or engineered and prefabricated to your specifications, Dynarail square tube and DynaRound round tube railing systems and Dynarail safety ladder systems meet or exceed OSHA and strict building code requirements for safety and design.



Custom Composite Solutions

Combining Fibergrate's design, manufacturing and fabrication services allows Fibergrate to offer custom composite solutions to meet our client's specific requirements. Either through unique pultruded profiles or custom open molding, Fibergrate can help bring your vision to reality.



Design & Fabrication Services

Combining engineering expertise with an understanding of fibreglass applications, Fibergrate provides turnkey design and fabrication of fibreglass structures, including platforms, catwalks, stairways, railings and equipment support structures.



Worldwide Sales & Distribution Network

Whether a customer requires a platform in a mine in South Africa to grating on an oil rig in the North Sea, or walkways in a Wisconsin cheese plant to railings at a water treatment facility in Brazil; Fibergrate has sales and service locations throughout the world to meet the needs and exceed the expectations of any customer.